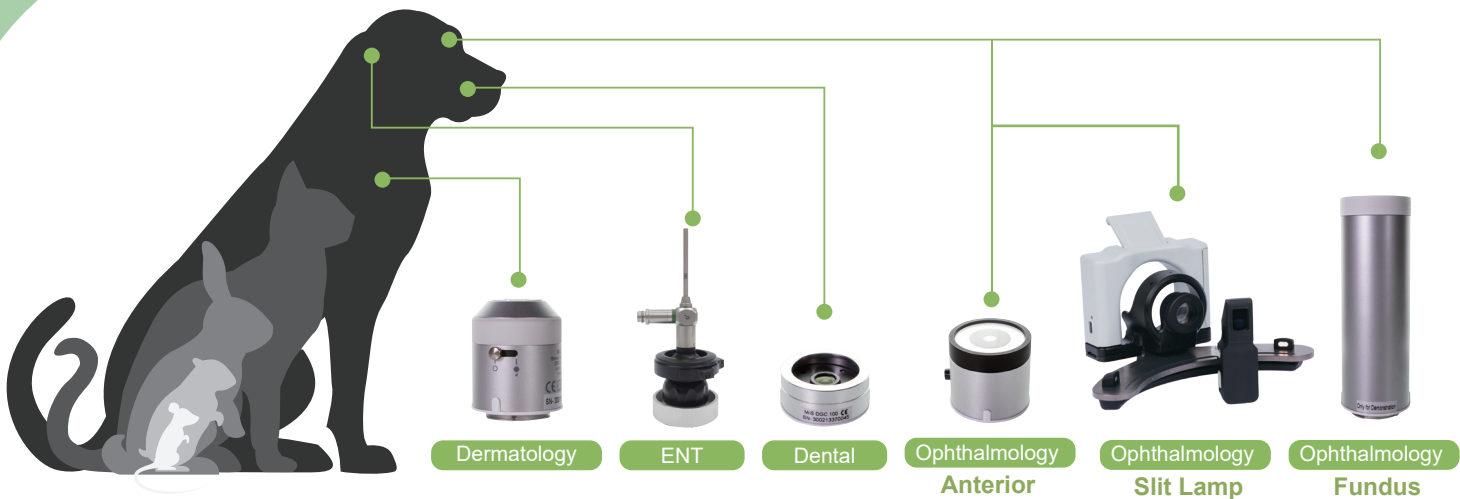




- ✓ Easy to use
- ✓ Quick to record
- ✓ Convenient to link!

horus
SCOPE

HORUS SCOPE for VET





HORUS SCOPE for VET



Changeable lens



Instant interface



Focus wheel



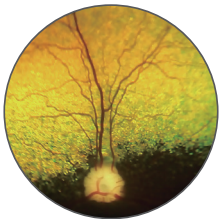
Software application

Clinical Showcase

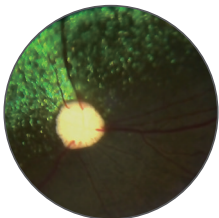
1. More details can be observed during diagnosis compared with naked eyes
2. Quick to record and trace for EMR
3. Easily for the communication between doctor and pet's owners



**Fundus Scope
DEC 100**



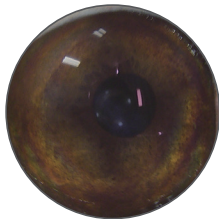
Normal



Progressive retina atrophy



**Anterior Scope
DEA 100**



Normal



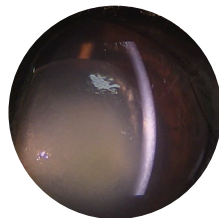
Keratitis



**Slit Lamp
ILS 100**



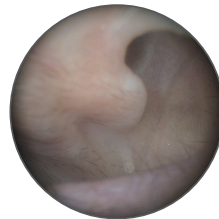
Normal



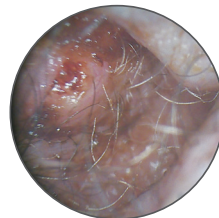
Anterior lens luxation



**ENT
Endo Adapter Set**



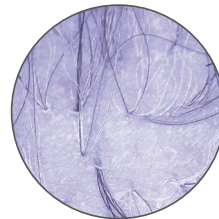
Normal



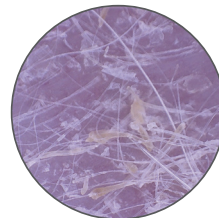
Otitis externa



**Dermoscope
DDC 100**



Normal



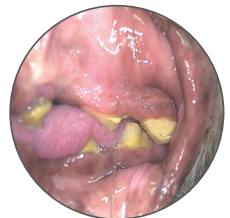
Alopecia and scale



**General Scope
DGC 100**



Normal



Dental calculus

Specification

Eye-fundus Camera	Non-mydratiac, 40 degree FOV, +/-20D	LCD Display	3.5" full color LCD
Anterior Scope	White light and Blue light (470nm)	File Format	JPEG, H.264 (1920 x 1080)
Slit Lamp	+/-45 degree, 3 Filters, 6 Slit-widths	Interface	Mini USB and AV output
Endo Adapter Set	Coupler for all Medical Endoscope Camera of C-Mount	Memory	Mico SD Card (2GB to 32GB)
Dermoscope	10mm, Polarization/Contact modes	Power	Li-ion rechargeable battery
General Scope	f=4mm, F/1.5	Operating Time	3 Hours