



DSC 300P

More Features, More Reliable

- Better CPU & sensor performance
- 3.5" capacitive touch panel
- Multi-touch (zoom in / out)
- Wi-Fi / Bluetooth module embedded
- HDMI Full HD live stream
- USB plug with lock
- Magnetic pogo touch charger
- Focus wheel



Diagnostic Set Device to Device for Telemedicine

Connecting vital sign equipment via Bluetooth to collect important measurements. Packing all information and uploading to your EMR system with DSC 300P seamlessly.



Vital Sign
Equipment

Bluetooth →

Miis



3.5" Touch screen



Wi-Fi / Bluetooth
USB / SD card



Cable lock hole

Mini USB

Pogo pad for charger

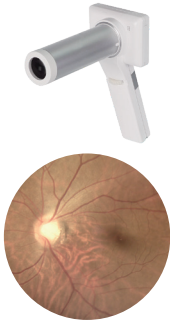
Micro HDMI

USB plug with lock

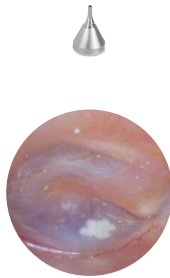
Magnetic charger

Through The Scope

Fundus Scope



Otoscope



Dermoscope



Generalscope



Endoscope



Specification

Item		DSC 300P	
Sensor		5 Megapixels (2592*1944)	
Focus type		Focus wheel	
LCD monitor		3.5" capacitive touch panel ; multi touch	
Microphone		○	
Speaker		○	
File storage		Micro SD card (2 ~ 32G)	
Interface	Wi - Fi	Embedded	
	Bluetooth	Embedded	
	Micro HDMI (1920 x 1080)	○	
	Magnetic charger	○	
	Mini USB	○	
Function	Manual focus	○	
	Auto exposure (endoscope adapter only)	○	
	Auto white balance (endoscope adapter only)	○	
Lens	Otoscope	DOC 300S	○
		DOC 100S	○
	Dermatoscope	DDC 200	○
		DDC 100	○
	General lens	DGC 100	○
	Eye fundus lens	DEC 100 / EEC 100	○
	Eye anterior lens	DEA 200P	○
		DEA 100 (ILS 100)	○
Endoscope adapter	Adapter 300	○	
Picture resolution		2560 x 1920	
Video resolution		2560 x 1920	
UVC resolution		640 x 480	

• Information contained in this leaflet is subject to change without prior notice.



Medimaging Integrated Solution Inc.

- Tel: +886-3-5798860
- E-mail: sales@miis.com.tw
- www.miis.com.tw
- 6F, No. 11, Park Avenue II, Hsinchu Science Park, Hsinchu 300091, Taiwan, R.O.C.

