



**horus**  
SCOPE

# Optical Coherence Tomography

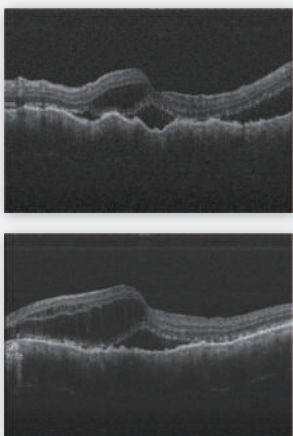
## ACT 100



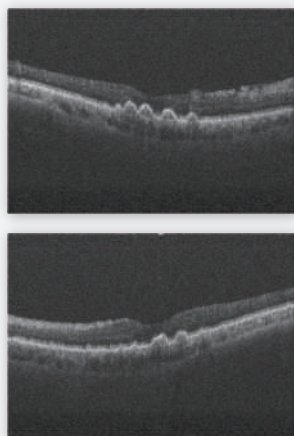
- 100% made and designed in Taiwan
- Precise diagnosis via horus SCOPE combo solution (OCT & fundus)
- Portable & compact
- 2-in-1 portable & desktop design
- Fully automatic - auto focus / auto alignment / auto trigger
- Thickness map - Retina / ONH / GCC



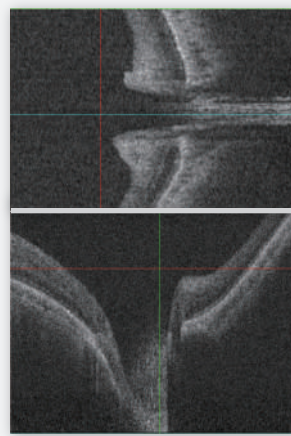
Edema



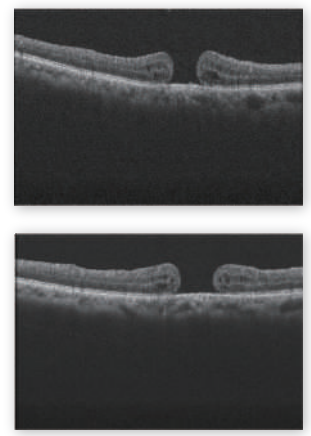
AMD

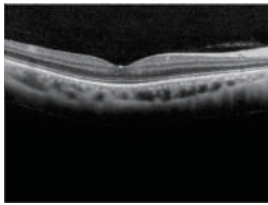


Glaucoma



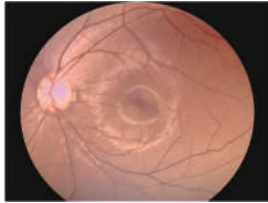
MH





### OCT Part

Axial resolution	10 um
Lateral resolution	20 um
Depth at tissue	~ 2 mm
Scan range (max)	6*6mm and 9*9 mm
Diopter range	+/-15 D
Scan speed	80 KHz
Minimum pupil diameter	2.5 mm
B-scan picture	1024 x 512 pixels



### Fundus Camera Part

Image resolution	5M pixels
Field of view	45 degrees
Minimum pupil diameter	4 mm
Diopter range	+/-15 D

#### Interface

HDMI  
Wi-Fi

#### Probe

L275 x W90 x H74mm  
Weight: 0.75 kg

#### Main box

L234 x W190 x H108mm  
Weight: 4.05 kg

## Combo OCT for the Entire Retinal Imaging Multiple configurations for portable and desktop application Flexible design to fulfill various operating scenarios!!

- ▶ Probe
- ▶ Screen
- ▶ Main box
- ▶ Chin rest (with motor module)



To integrate with MiiS chin rest and an auto-aligning 3 axis module.



To combine with a display as a portable OCT.



Emergency



Pediatrics



Ward round



Clinics



Telemedicine



Education



Surgery



## Medimaging Integrated Solution Inc.

Tel +886 3 579-8860  
 Fax +886 3 579-8011  
 Address 6F, No. 11, Park Avenue II, Hsinchu Science Park, Hsinchu 300091, Taiwan, R.O.C.  
 Website [www.miiis.com.tw](http://www.miiis.com.tw)  
 Email [sales@miiis.com.tw](mailto:sales@miiis.com.tw)

